



Fiesta STMK8 Fitting Guide.

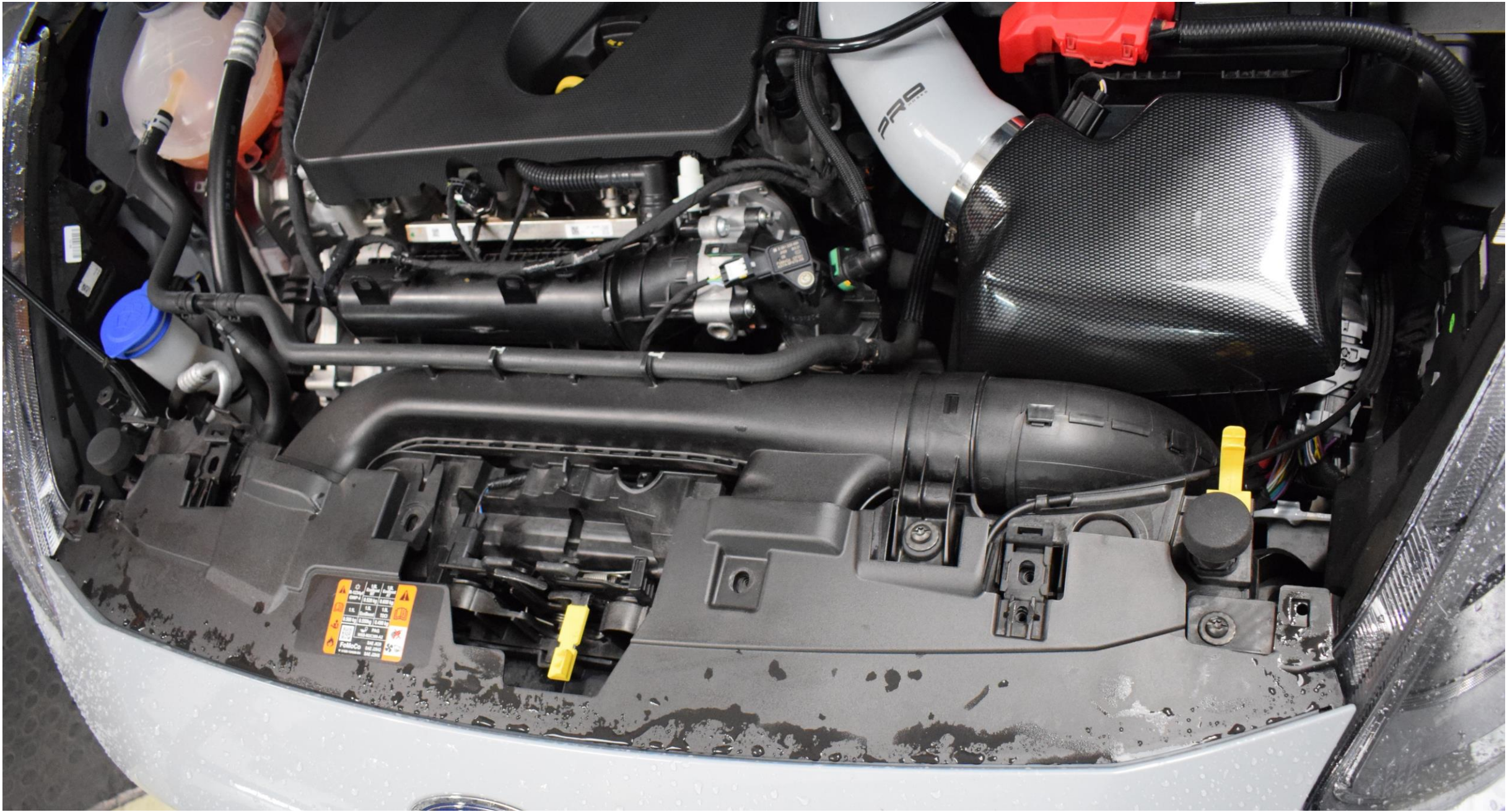
These parts should be fitted by a skilled
fitter/mechanic

Making sure the Vehicle is safe to work on.

- Please ensure that you follow these steps before working on your car.
- Make sure your trolley jack or ramps are suitable to lift your fiesta ST.
- If using A trolley jack, please make sure that you have suitable axle stands.
- Disconnect the battery terminals.

Bumper Removal.

- Lift your vehicle and if you're using a Trolley Jack, secure using Axle Stands
- Remove Under tray Fixings, front and main covers should be removed stored until refitting.
- Remove wheels and inner arch, fixings. Front half only.
- Pull Inner Arches back to gain access to upper Bumper fixings and remove.
- Disconnect fog light wiring clips and lower fixings.
- Remove fixings from upper slam panel.



Warning label on the battery cover with symbols for fire, explosion, and other hazards.

PRR





Front under tray and lower bumper fixings ready for removal.

Bumper now removed.

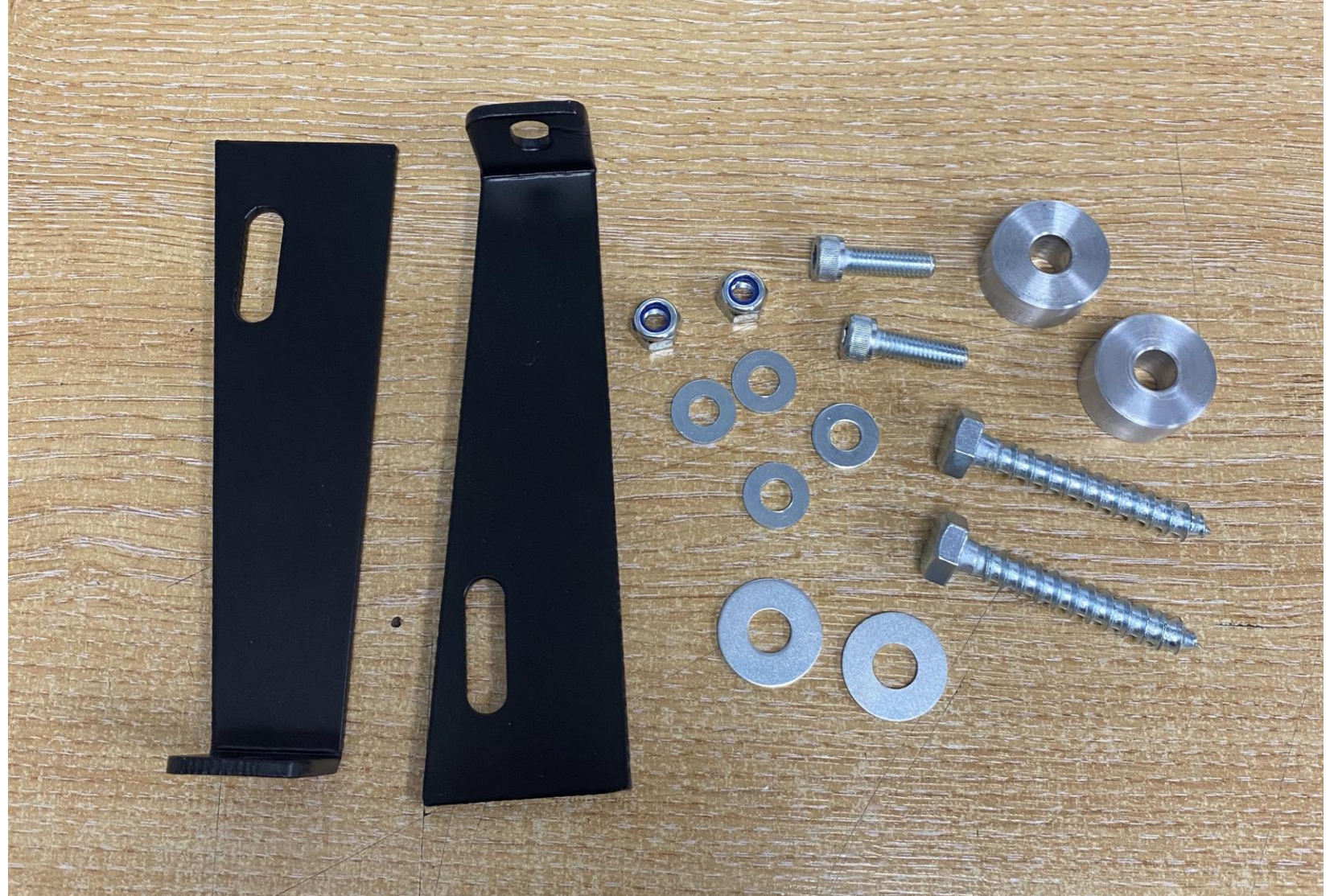
Simply remove the standard intercooler



Intercooler fitting kit

This should include the following components.

- 1x set of brackets
- 2x 13mm spacers
- 2x 13mm screws with x1 washer each
- 2x M6 bolts
- 2x small nuts
- 4x small washers

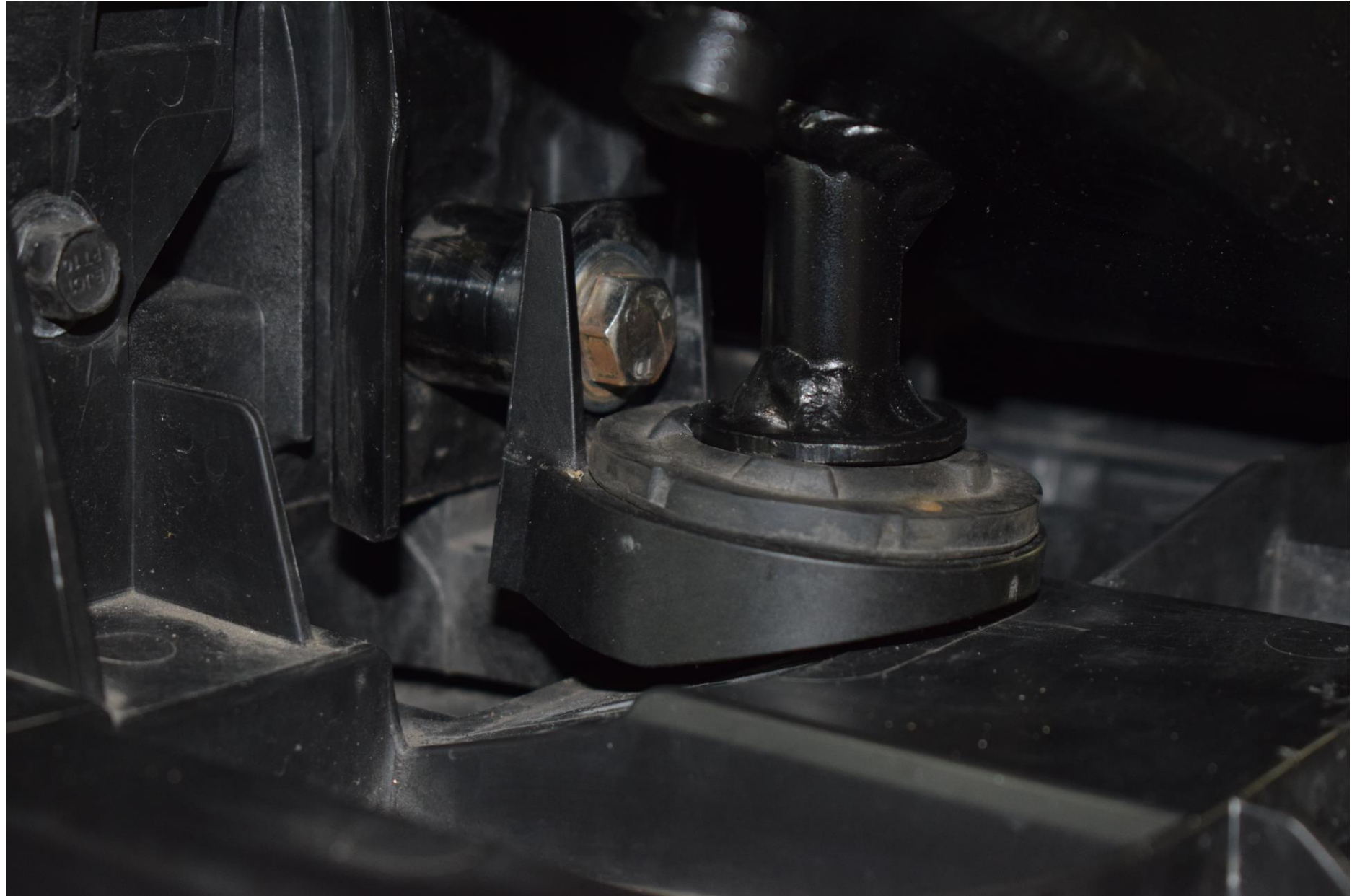


Spacer fitted

Remove the screw used to hold up the std intercooler holder/bracket mount – shown in the image.

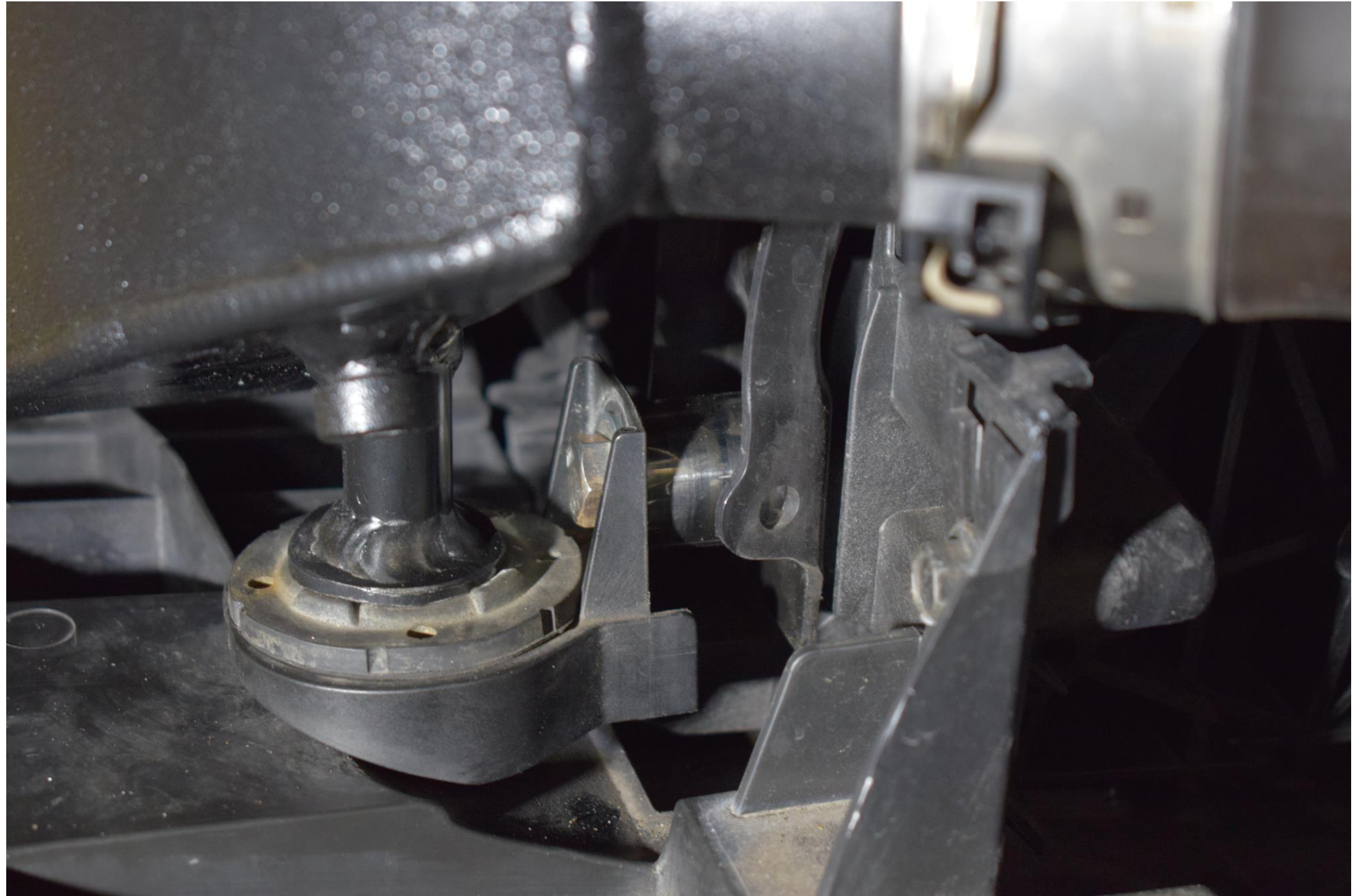
Place spacer in behind the intercooler holder bracket and use washer and 13mm screw to refit.

As shown in the image.



Spacer fitted

Image of the
Spacer fitted
with 13mm
screw and
washer on the
following
side.



Brackets

The 2 brackets provided will be fitted as shown by the red squares in the image.

This will require the M6 bolts, nuts and washers.

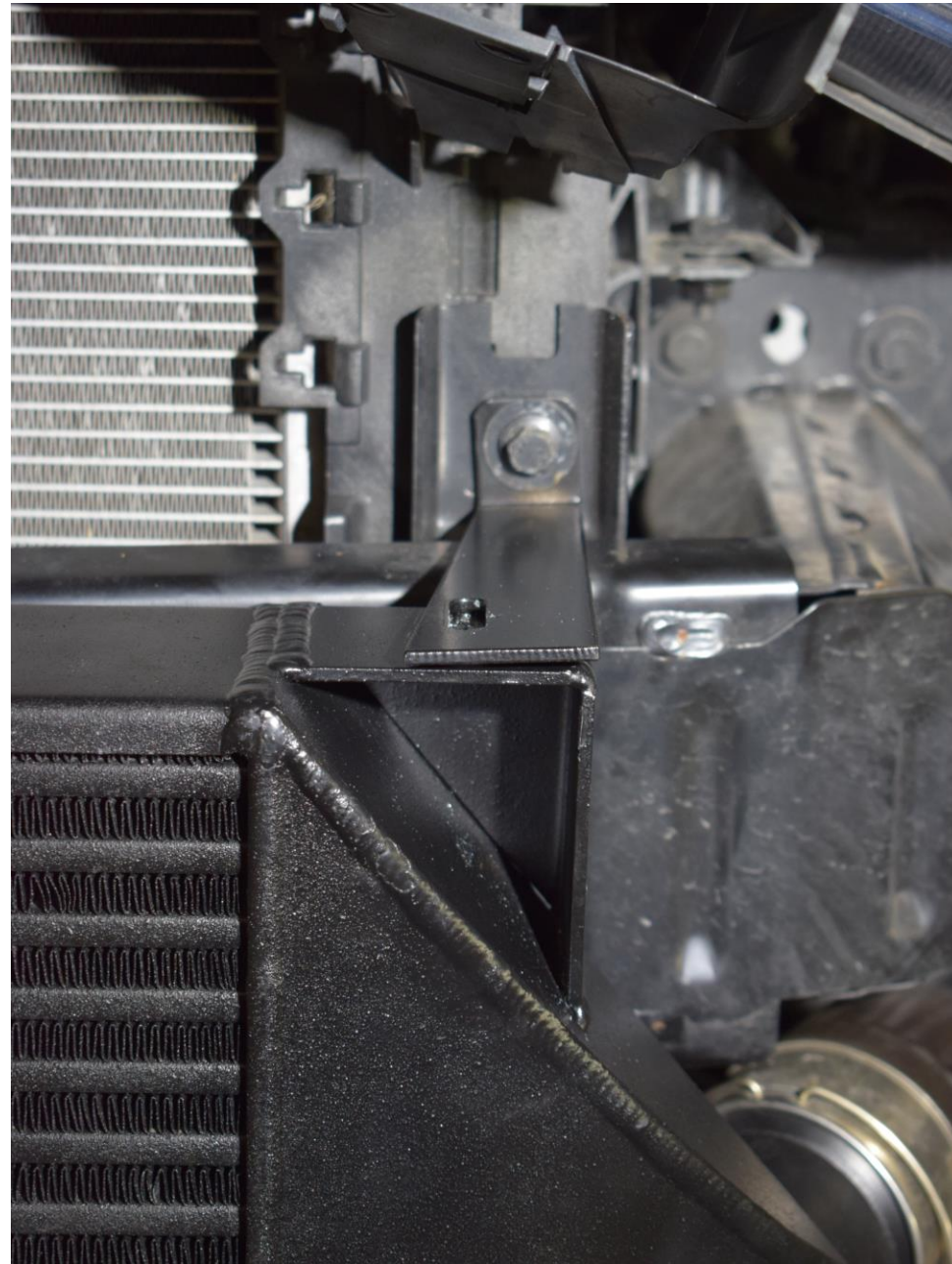


Bracket

Connect bracket to the car with the OEM bolt currently used.

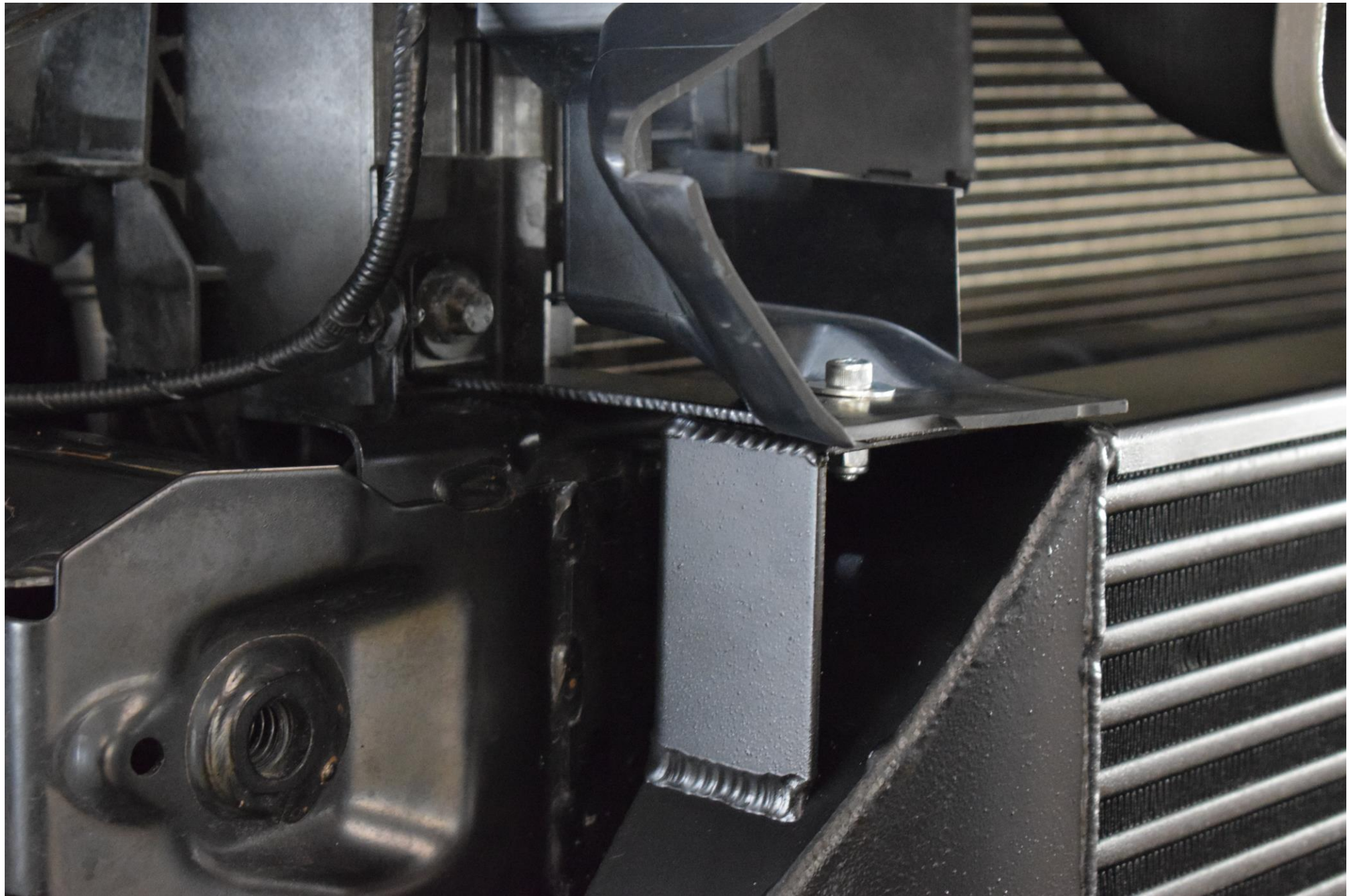
Line up the bracket as shown in the image. Make sure you line up the plastic surrounding in line with the bracket hole.

Use the M6 bolts, nuts and washers to secure the intercooler to the bracket once lined up correctly.



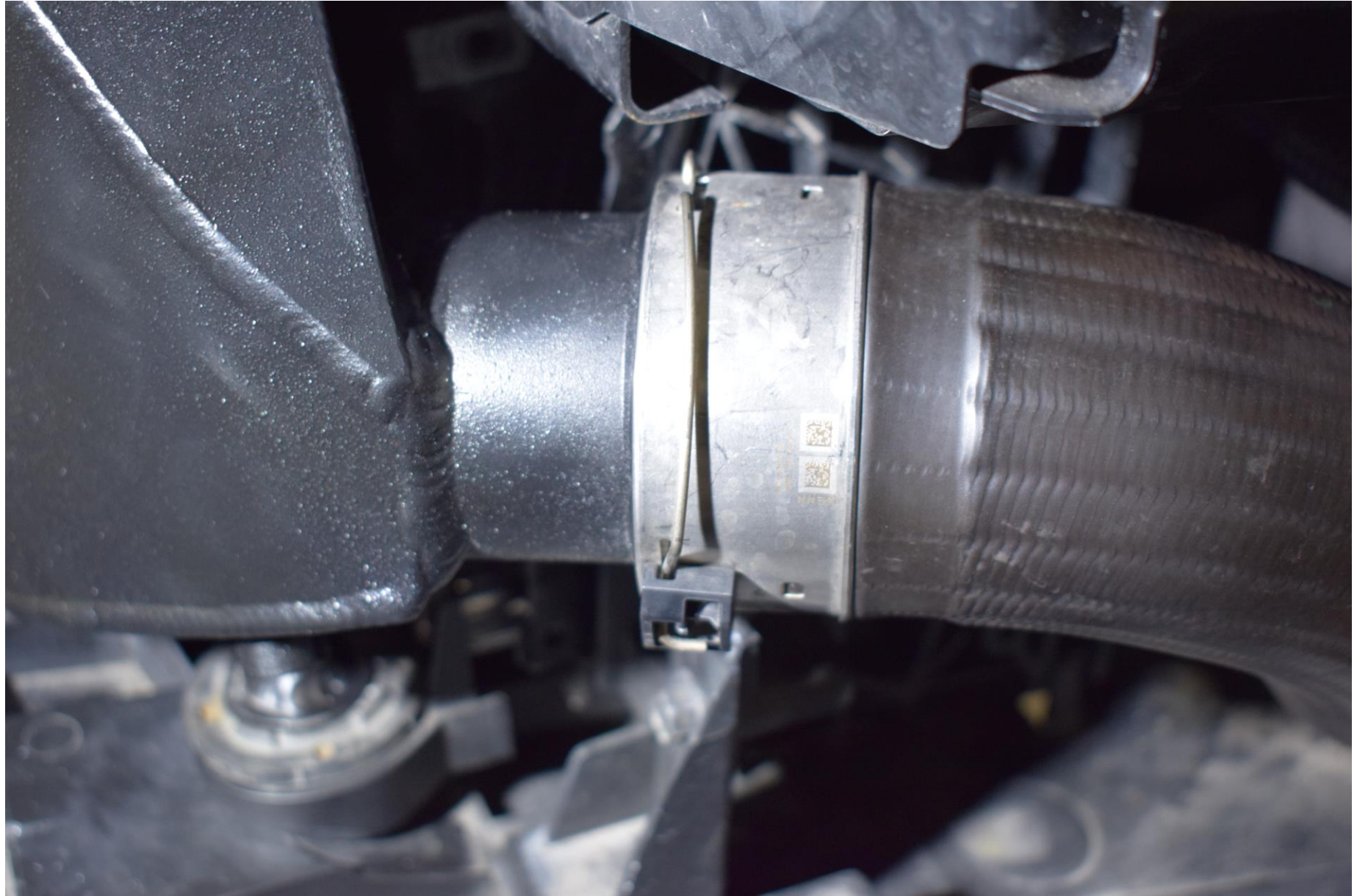
Bracket secured

Final fitment of the bracket should look like the image.



**Standard
intercooler pipes.**

Refit when you are
happy the
intercooler is
secured.





Before.

After.



Bumper refit.

Refit Slam panel to Bumper, making sure all clips are pushed back in properly and Scoops are still aligned.

If you are happy with the fitment and alignments. Refit the bumper making sure all clips are aligned and Bumper fits perfectly.



For any additional assistance. Please contact us via email on:

Sales@Dreamscience.co.uk