



Fiesta STMK8 Fitting Guide.

These parts should be fitted by a skilled
fitter/mechanic

Making sure the Vehicle is safe to work on.

- Please ensure that you follow these steps before working on your car.
- Make sure your trolley jack or ramps are suitable to lift your fiesta ST.
- If using A trolley jack, please make sure that you have suitable axle stands.
- Disconnect the battery terminals.

Bumper Removal.

- Lift your vehicle and if you're using a Trolley Jack, secure using Axle Stands
- Remove Under tray Fixings, front and main covers should be removed stored until refitting.
- Remove wheels and inner arch, fixings. Front half only.
- Pull Inner Arches back to gain access to upper Bumper fixings and remove.
- Disconnect fog light wiring clips and lower fixings.
- Remove fixings from upper slam panel.







Front under tray and lower bumper fixings ready for removal.

Bumper now removed.



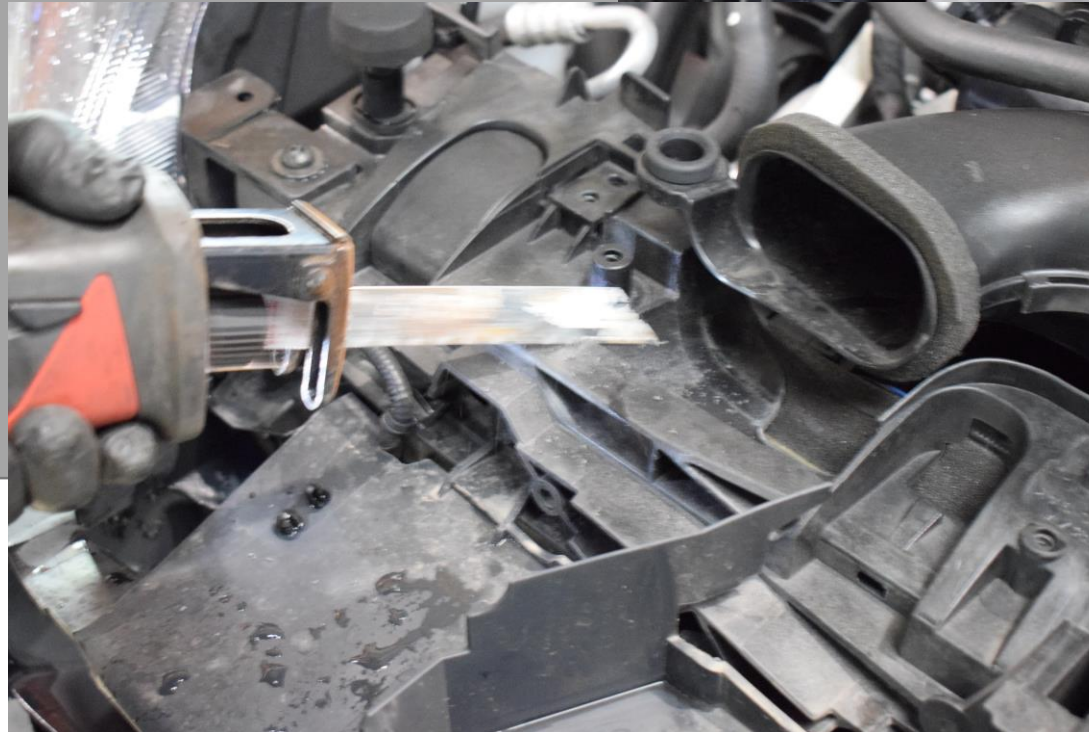
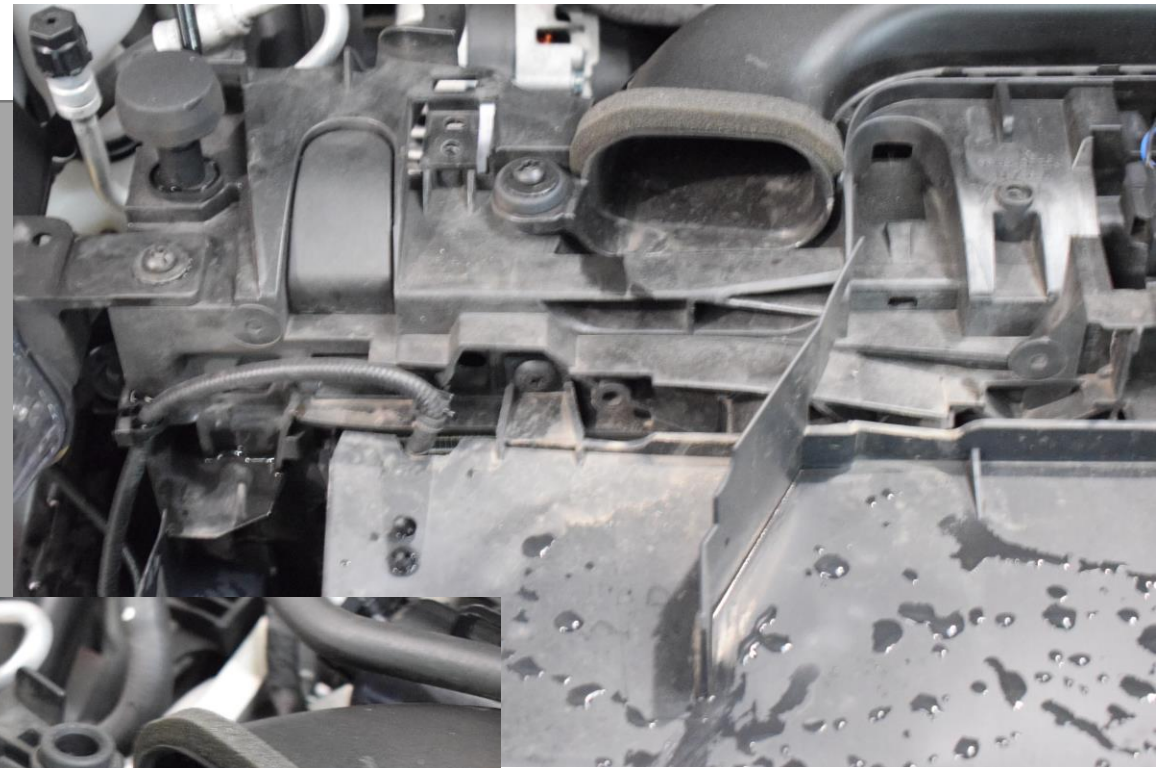
Radiator Shroud and Crash Panel modification.

- Once the bumper is removed, you will see the shroud and slam panel that needs to be modified to allow the Scoops to fit.
- To make these modifications you will need a pad Saw or reciprocating saw. Please be careful not to cause damage when using the latter option.

Driver Side Intake Modification.

Using your saw, Cut around the bracing in the panel that is obstructing the fitment of the Drivers side intake.

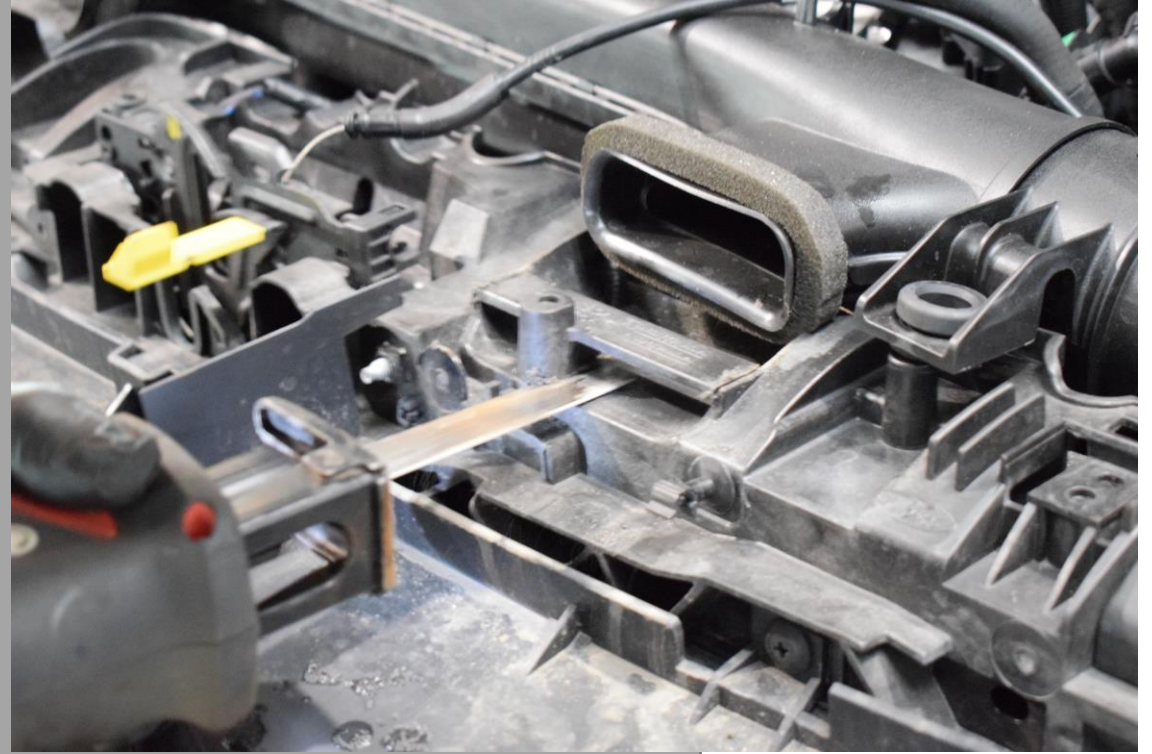
Make sure not to cause any damage when doing so. Ensure that you clean each cut with a file or wet and dry.



Passenger Side Intake Modification.

Made 3 x Cuts to open up the new Intake port on the slam panel.

Once the cuts have been made, please clean up with a File or Wet and Dry.

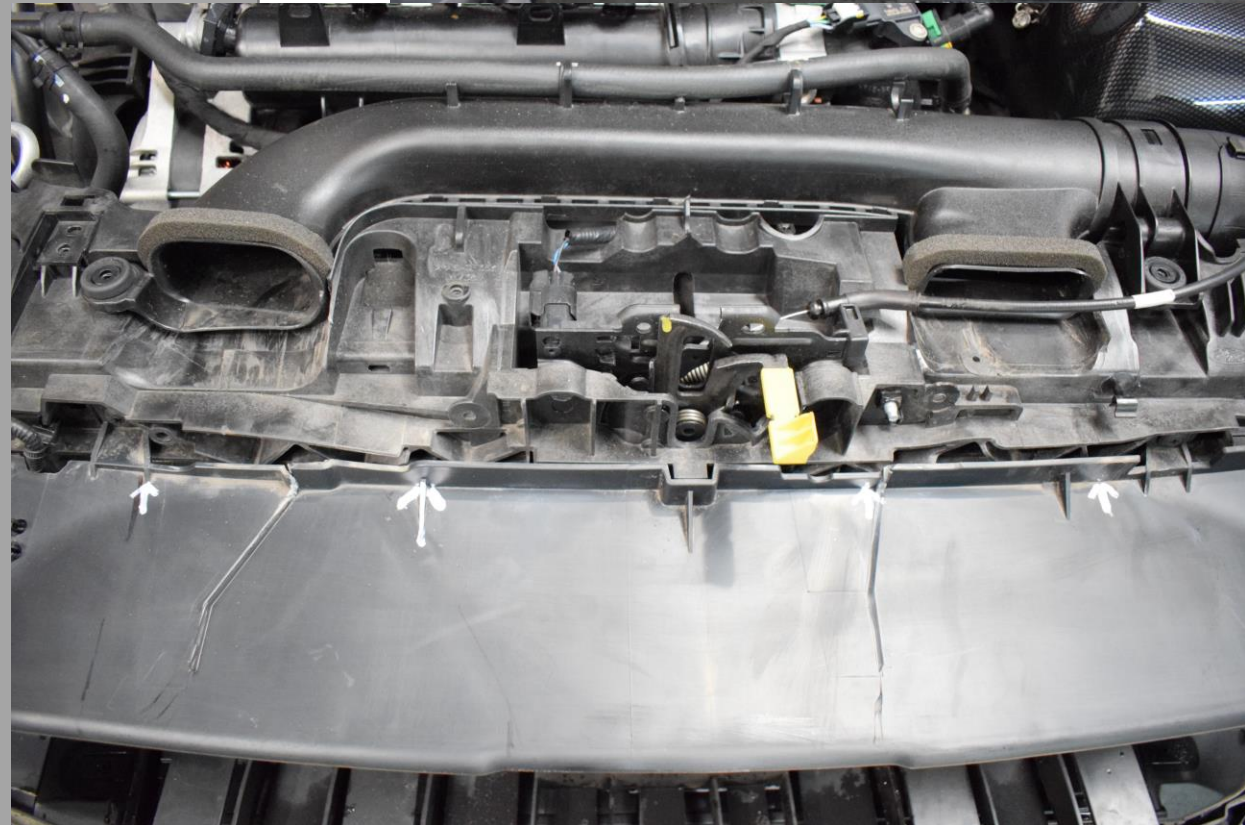


Intake Scoop cut out.

Once the Cuts have been made to both sides, you will need to prep each side to be cut. The next cuts will allow the intakes to be installed.

Score along 2 x uprights on the top of the shroud and snap off.

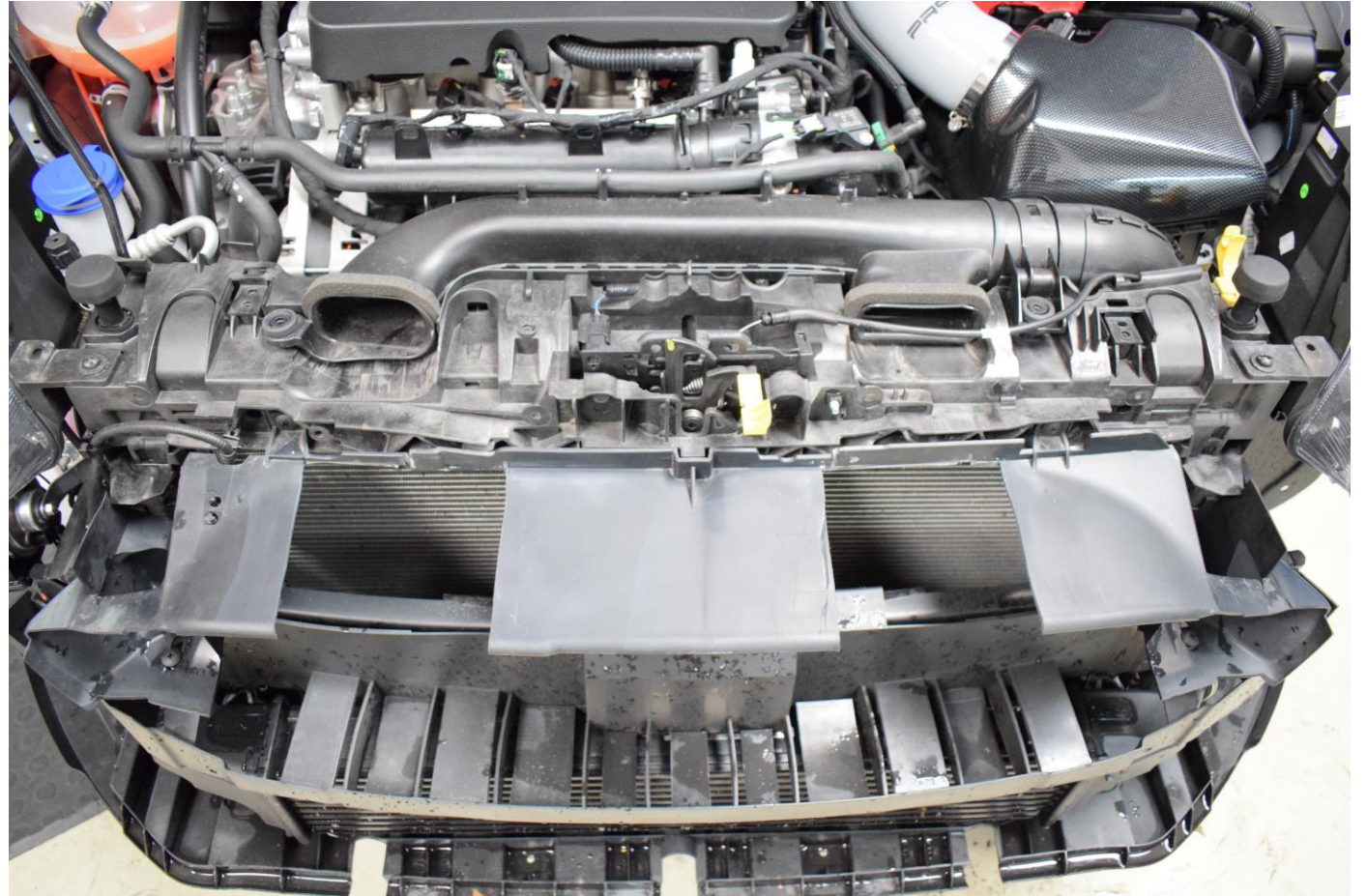
Hold Scoops up to holes, mark out the Shroud cut. Make sure that the cuts aren't wider than the holes on each scoop mount.



Initial scoop fitting.

At this point you will have the basic shape for the cut outs. When you press the intakes into the holes you will notice that each slot will need slight modifications to allow the fitment of each intake scoop.

Make sure that each cut is cleaned up using wet and dry.





Intake Scoop fitting.

Once the cuts have been made to safely receive the intake scoops. You will have to make 4 x 6mm holes, before doing so, ensure that you are 100% happy with the Scoop alignment. The scoops and the Shroud will need drilling and bolting using 4 x 6mm bolts and nylock nuts. (Supplied)

Please note that each scoop is labelled on their under side.



Once you've fitted the scoops you will need to Glue each colour rims to each scoops. Please Allow time for glue to set.

Slam Panel Modifications.

Put bumper on protective stand and remove upper slam panel.

Present upper slam panel to the car. Taking note of which parts needs to be cut back to allow the scoops to pass through.

Please make sure all cuts are cleaned up.

Add both 2 x Neoprene Strips to panel with **Red line**.



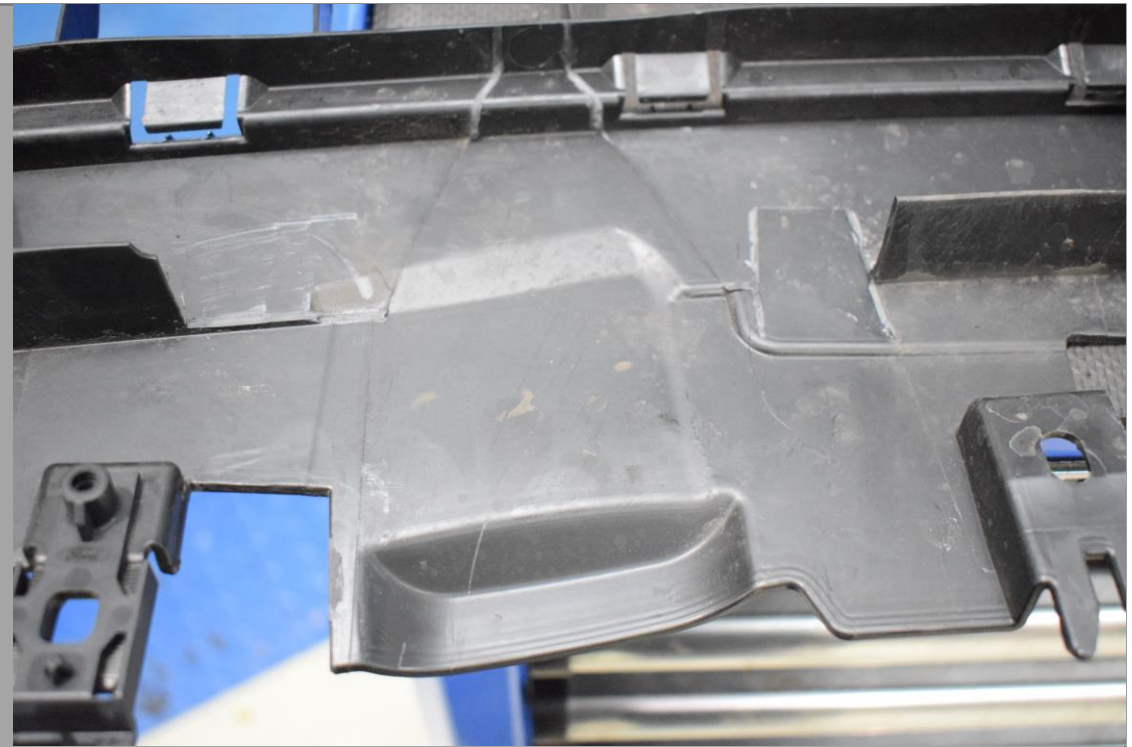
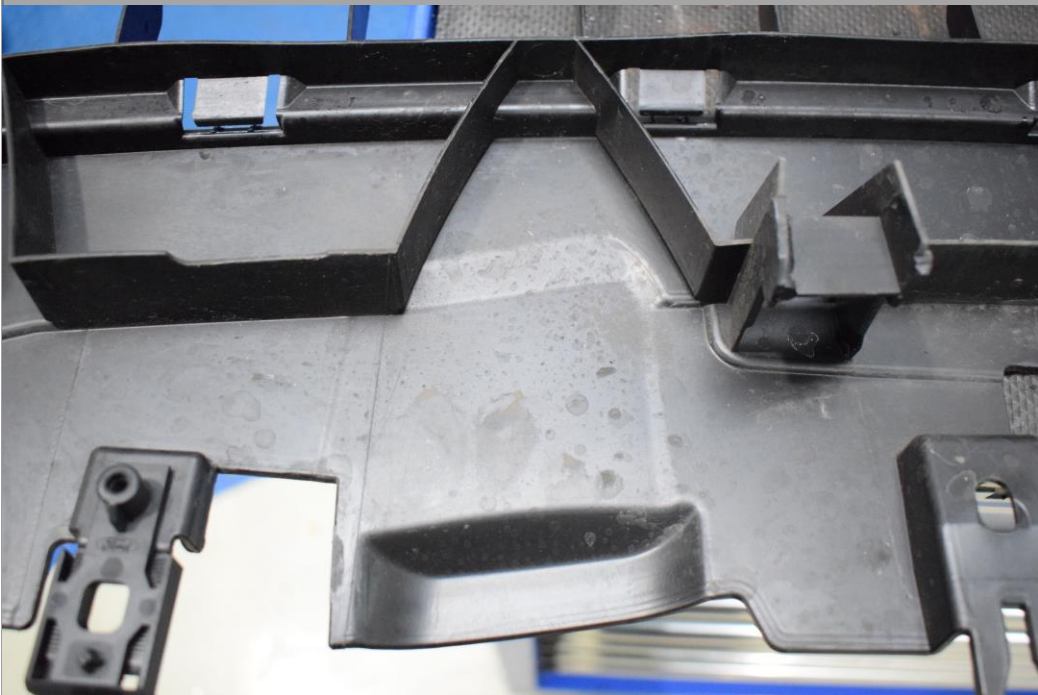


Before.

After.



Before.



After.

Bumper refit.

Refit Slam panel to Bumper, making sure all clips are pushed back in properly and Scoops are still aligned.

If you are happy with the fitment and alignments. Refit the bumper making sure all clips are aligned and Bumper fits perfectly.



For any additional assistance. Please contact us via email on:

Sales@Dreamscience.co.uk