

EVOLVE-R INSTALLATION MANUAL

INSTALLATION

1. DOWNLOAD THE SOFTWARE

Please visit the Evolve website at www.evolveautomotive.com to download the Evolve-R software. It can be found under 'Manuals', or [visit this link](#).

Evolve-R software is compatible with Windows © 2000, Windows® Xp or Windows® 7.

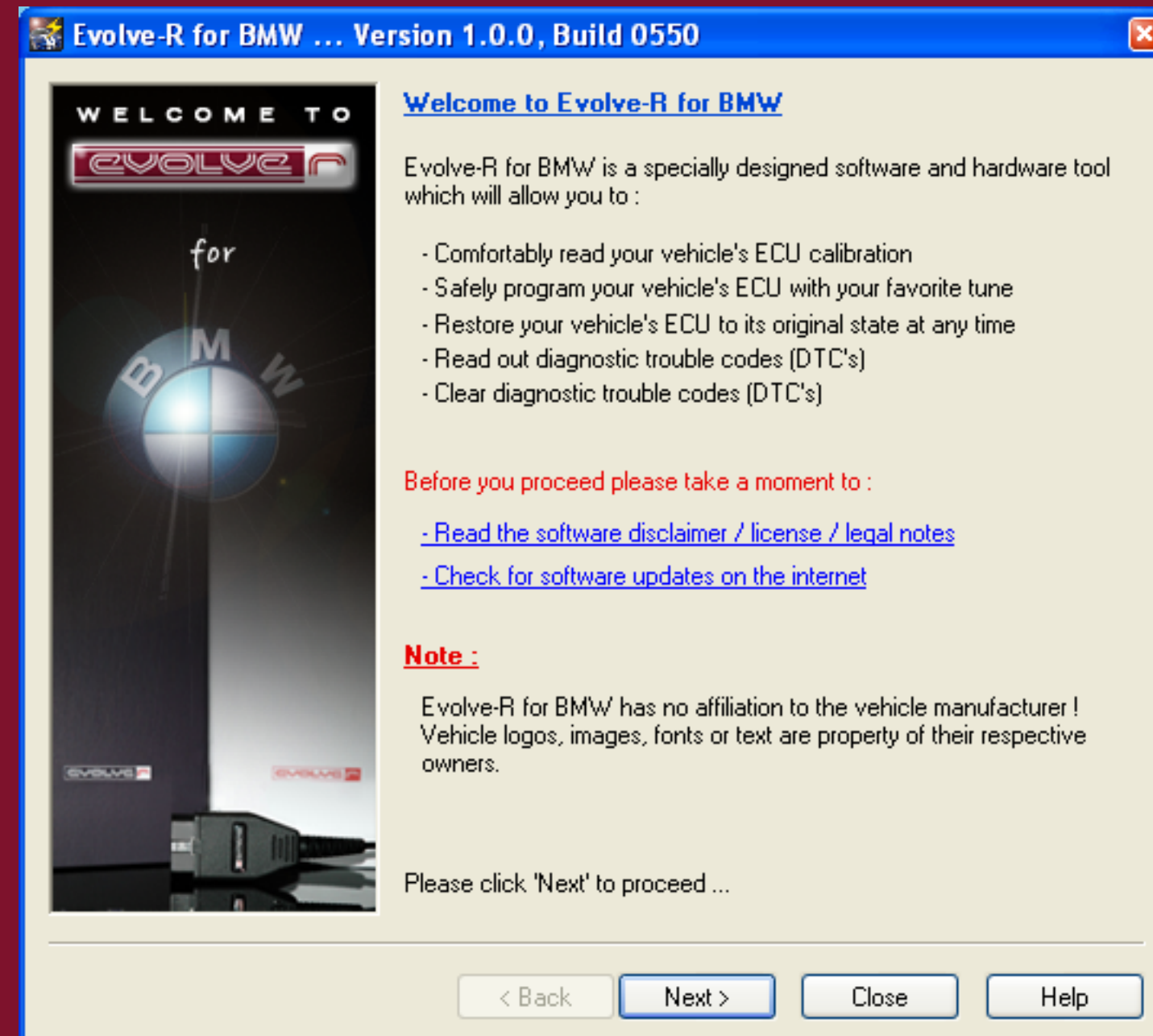
Not compatible with Mac (to run you will require Windows partition using Bootcamp, Parallels or VMWare Fusion).

2. PLUG IN YOUR EVOLVE-R CABLE ALLOWING ANY DRIVER INSTALLS TO TAKE PLACE

3. LAUNCH THE SOFTWARE AND FOLLOW THE ON-SCREEN INSTRUCTIONS

Ensure all other software such as screensavers, power saving mode, alarms or any other programs that could interrupt the process are closed and that your laptop has sufficient battery charge for at least 1 hours operation or preferably plug into a mains supply. Do not use the vehicle as a power supply.

1. OPENING SCREEN



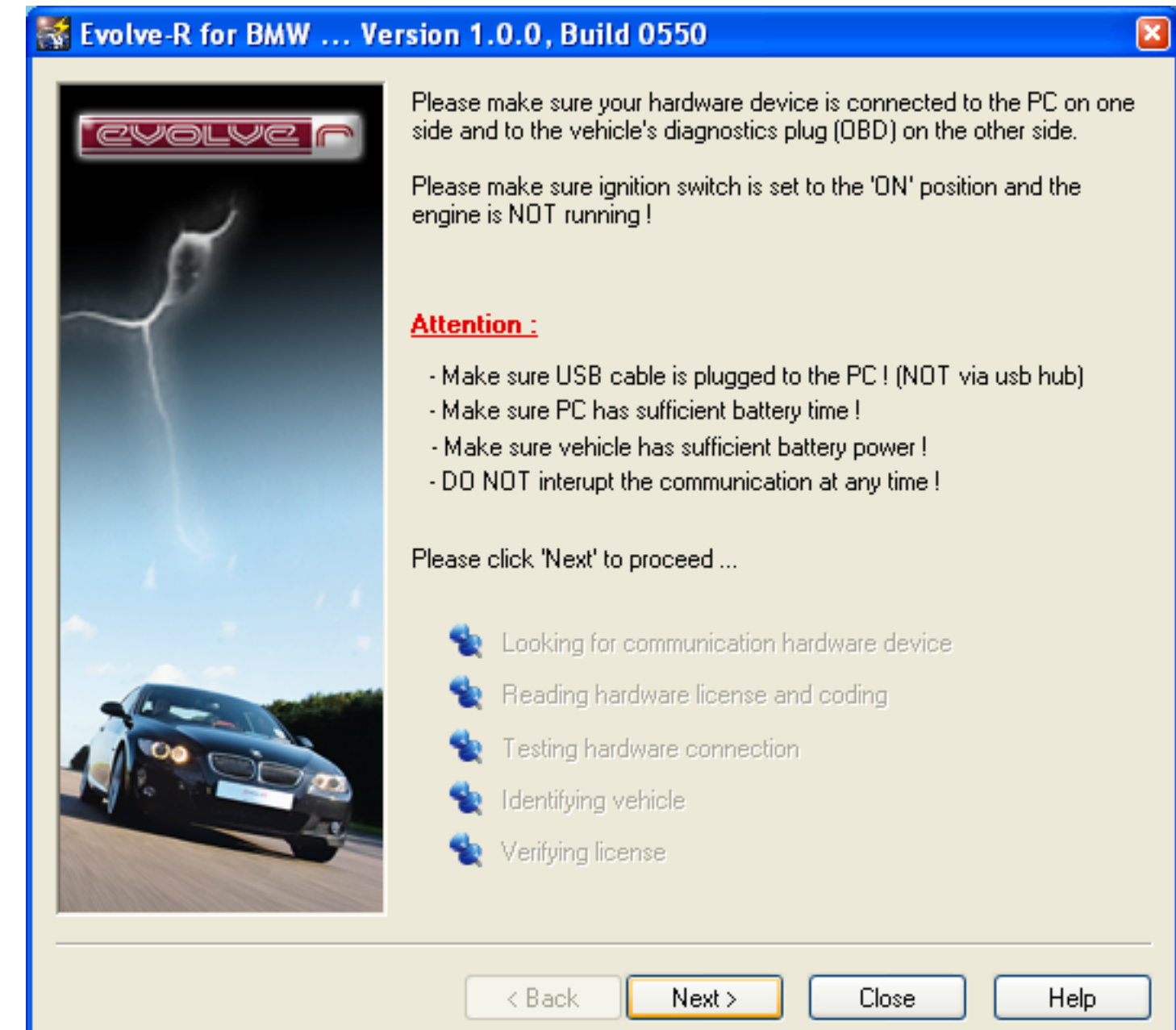
2. COMPUTER RECOGNITION



Ensure your vehicle battery is sufficiently charged:

- All 135i/335i/MSD80/X5 4.8, 5.0, X5M - require a battery charger of minimum 40A to be connected at all times. Ensure all lights, heating/air conditioning and electrics are switched off and that no other
- battery draining devices are connected.

3. PRE-WRITE TESTS



'Make sure ignition switch is set to 'on' and engine is NOT running':

Ensure the gas/petrol gauge shows:

For vehicles with keys: click to second position.

- For push button start: Push start button twice without pressing the brake pedal until fuel gauge shows.

4. VEHICLE RECOGNITION

5. OPTIONS SCREEN

Click 'Next'

EVOLVE R

Vehicle information :

Detected ECU Type : Siemens DME MSS52/54

Vehicle Ident. No. : WBSDE92060BJ10908

USB Device information :

USB Device SN : 1010 - Master

Coded ECU Type : No ECU coding needed

Coded Ident. No. : No identification needed

Vehicle identification has been retrieved and tested successfully.
The system is now ready to communicate with this vehicle.

Please click 'Next' to proceed ...

< Back

Next >

Close

Help ++

Click 'Read ECU Memory'

EVOLVE R

Identification details :

ECU Type : Siemens DME MSS52/54

Vehicle Manufacturer Ecu Hardware Number : 7837965

Vehicle Manufacturer Ecu Software Number : 7837953

Vehicle Identification Number : ██████████

...

...

...

...

Calibration options :

Read ECU Memory

Program ECU Memory

Recover ECU Memory

Diagnostics options :

Diagnostics

Data Logging

Extra options :

Software options

< Back

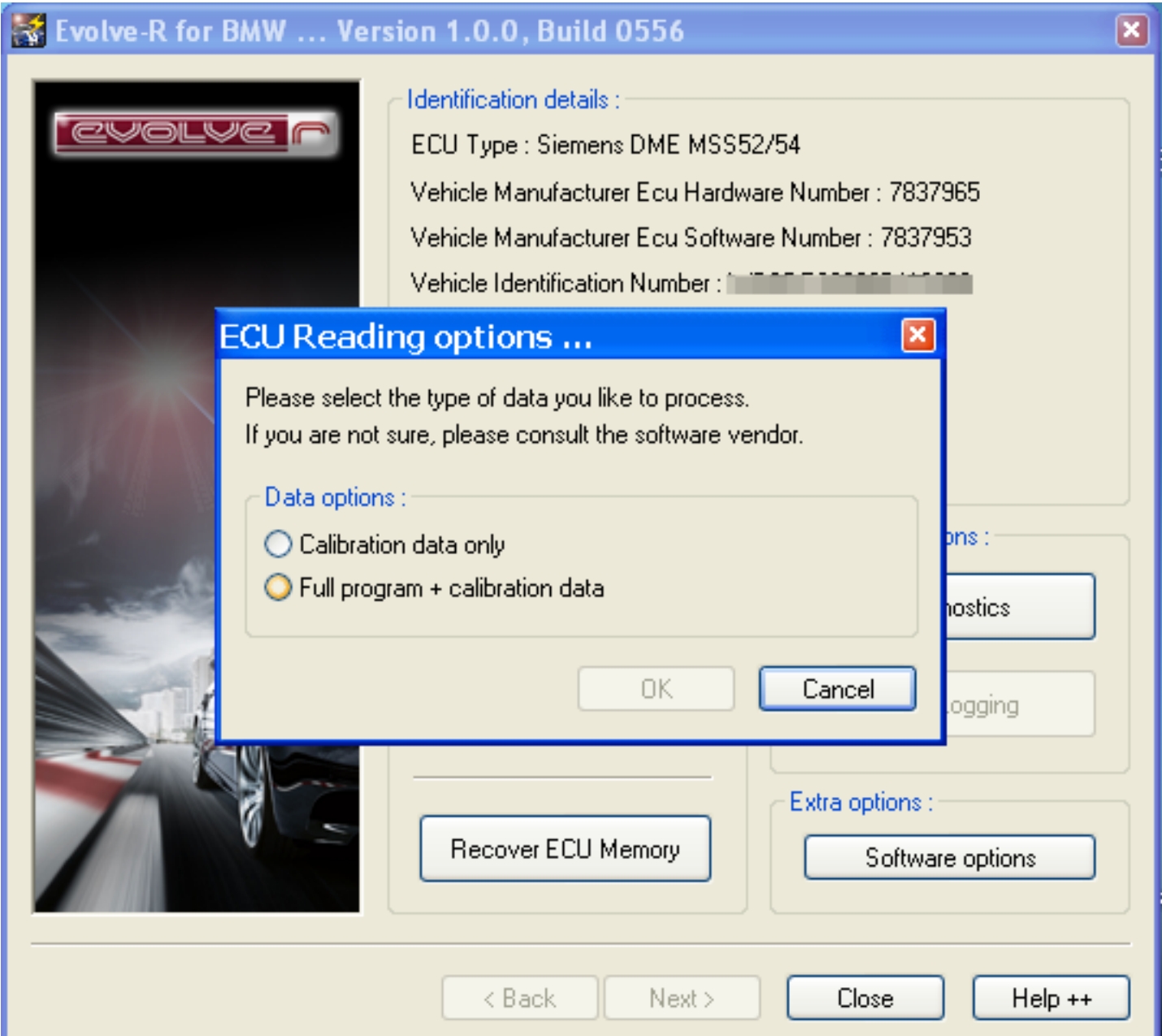
Next >

Close

Help ++

EVOLVE

6. ECU READING OPTIONS



This part of the process requires you to choose the correct 'read' for your vehicle. To choose the correct read, please find your vehicle/ECU below:

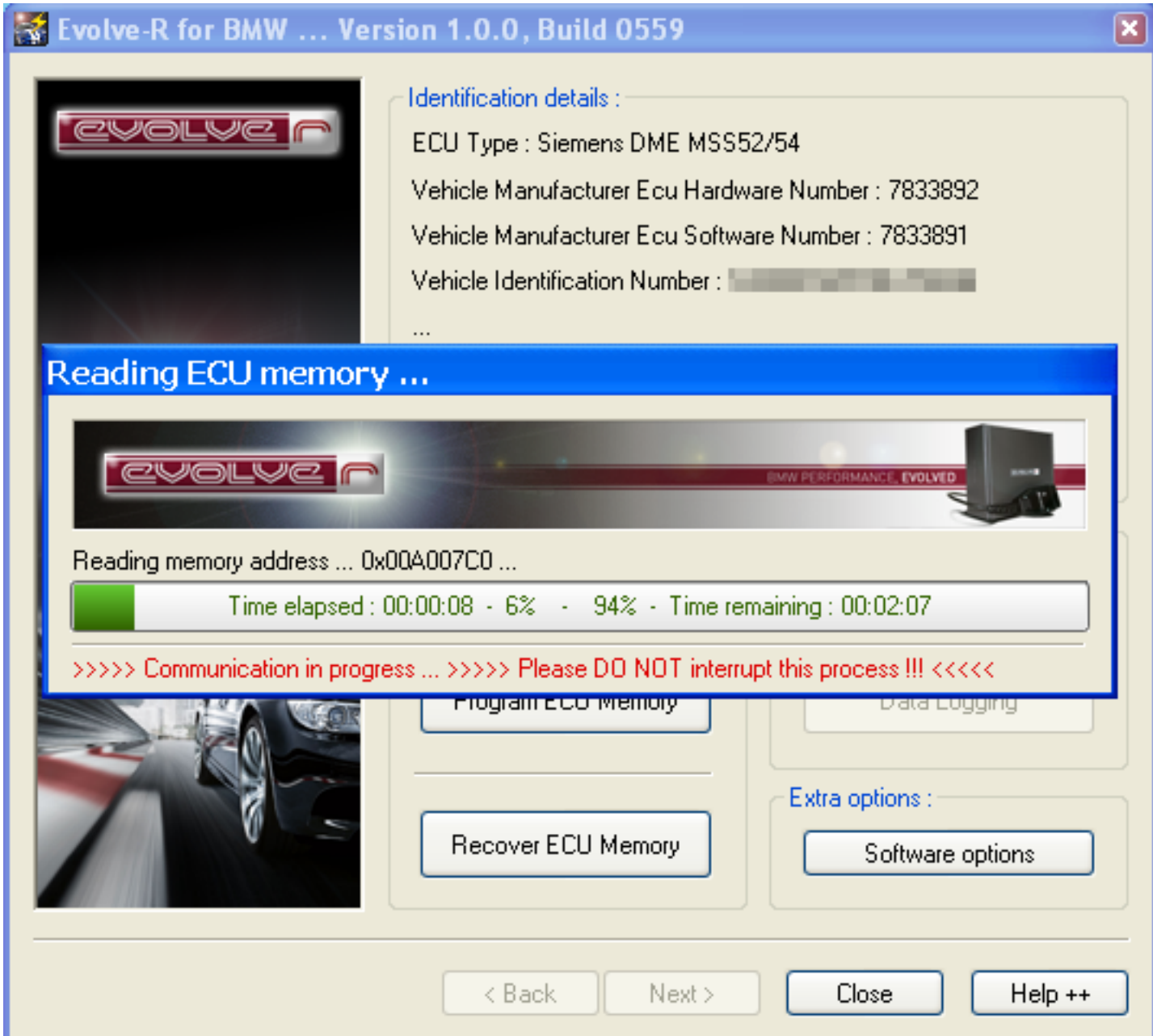
Calibration Data Only
MINI R56 MCS
Full program + calibration data
E46 M3, E9X M3, N54 (135i, 335i, 535i) E39 M5, E60 M5, Z4M, 4.4 V8 TT's All vehicles with MSD8X/MSV70 ECUs

If you are unsure of the engine/vehicle please contact us on support@evolveautomotive.com

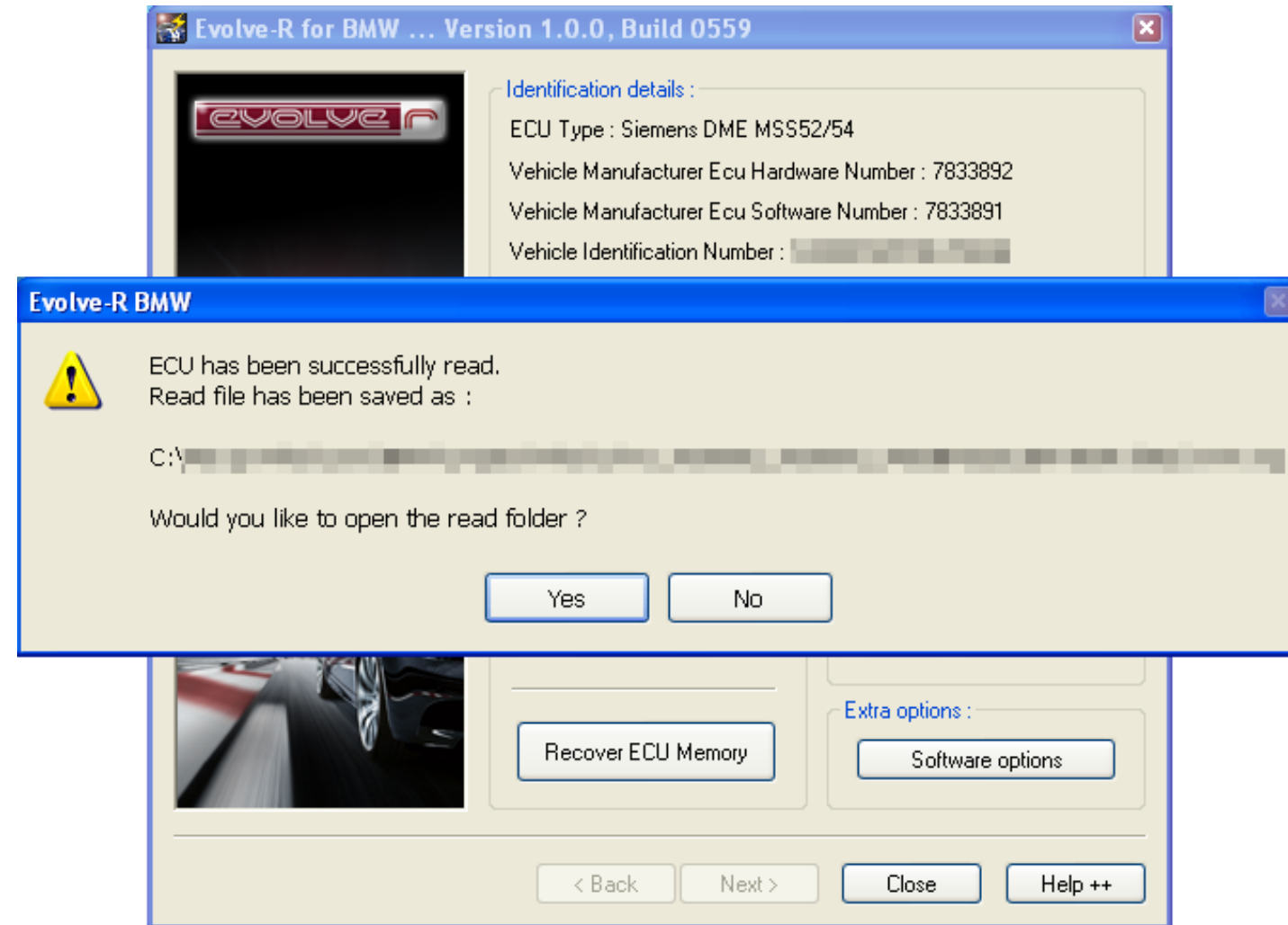
7. VEHICLE RECOGNITION

8. READING ECU MEMORY

Click 'Read ECU Memory'



9. READ COMPLETE



5. SAVE YOUR FILE

Save your tuned file.
Please email this file to:
data@evolveautomotive.com

Please include:
A list of any/all modifications you have on your car as well as the Minimum Octane fuel you will be using.

Also Your choice of the following:

- Rev limit raise - Yes/No (please see notice)
- Top Speed Limit removal - Yes/No. (please see notice)
- CEL removal - removes CEL if you have no cats


E46 M3 specific:

- SMG Shift Lights - for manual cars only
- Sport Button Memory - stays on after ignition-off

E9X M3 / E39 M5 / E60 M5:

- Cold Start Delete - removes CAT warming sequence on cold starts.

Allow upto 48 hours for receipt of your tuned data file.

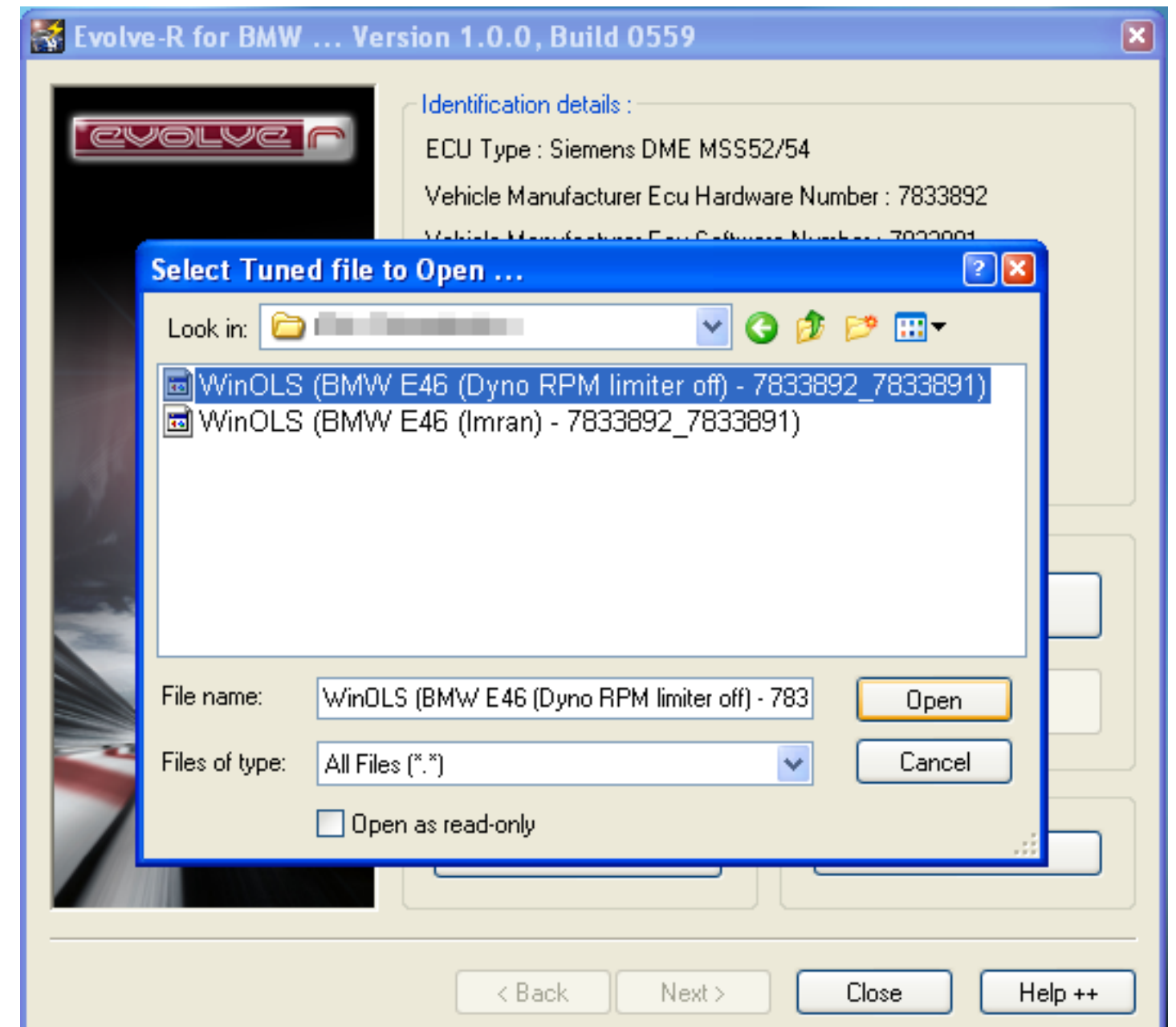
 **WARNING** - Alterations to RPM Limit and Top Speed Governor may be visible by the manufacturer even after returning to standard ECU file.

9. YOUR TUNED FILE

After at least 2 working days, you should receive your tuned file. Upon receipt of this file, please save to your harddrive.

10. SELECT YOUR FILE

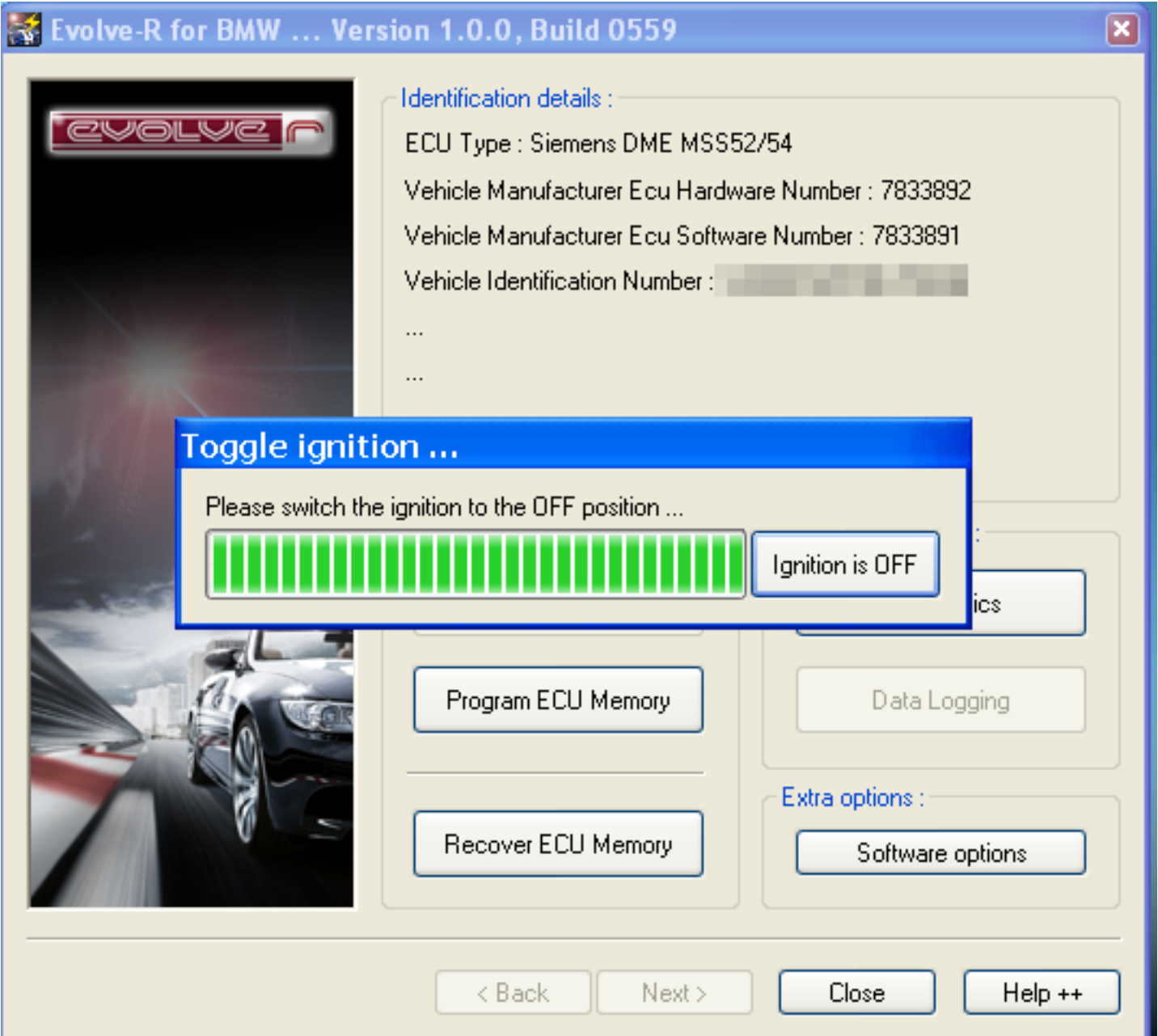
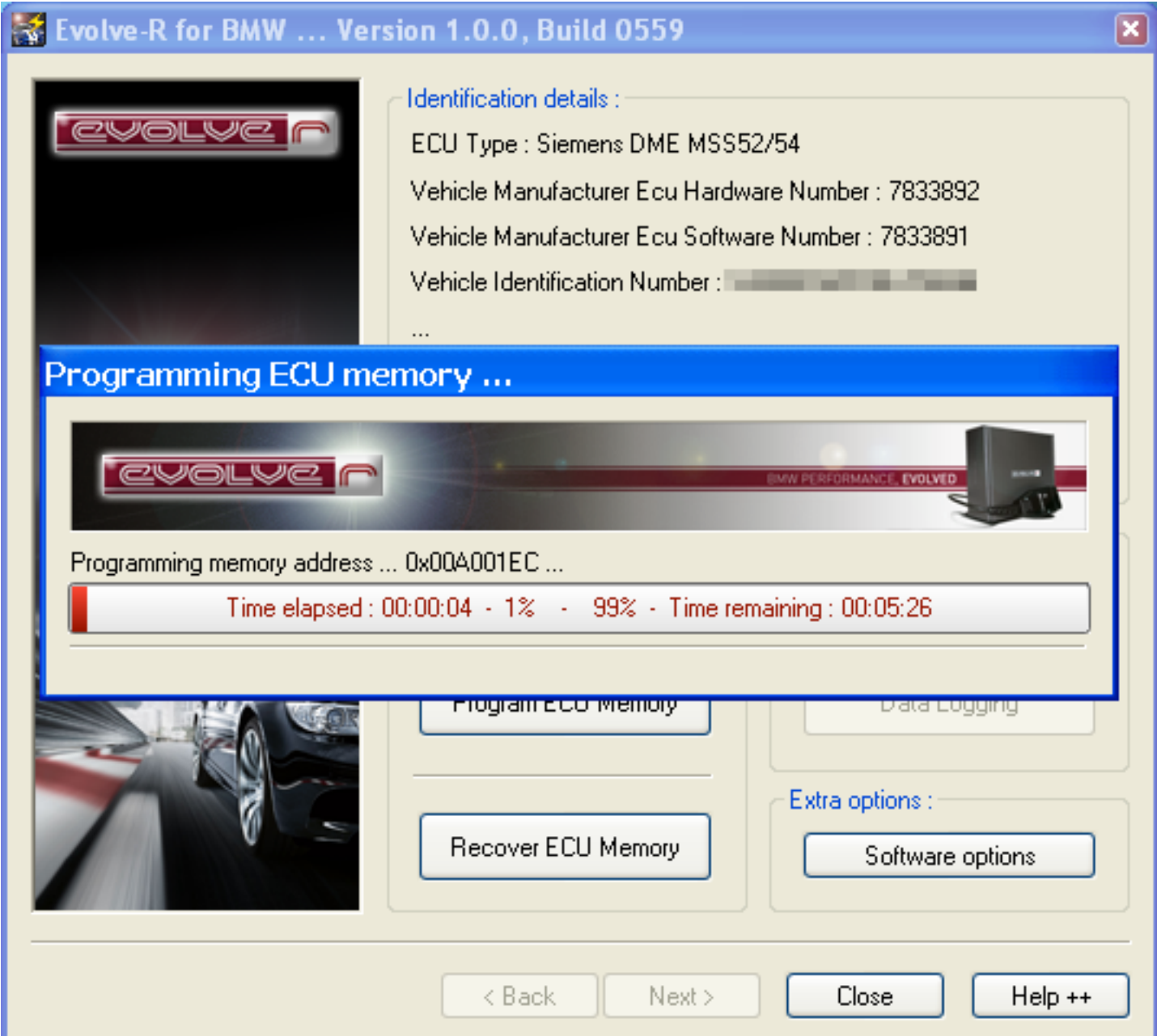
Click '**Program ECU Memory**'



11. VEHICLE RECOGNITION

8. WRITING COMPLETE

Turn your vehicle ignition to OFF



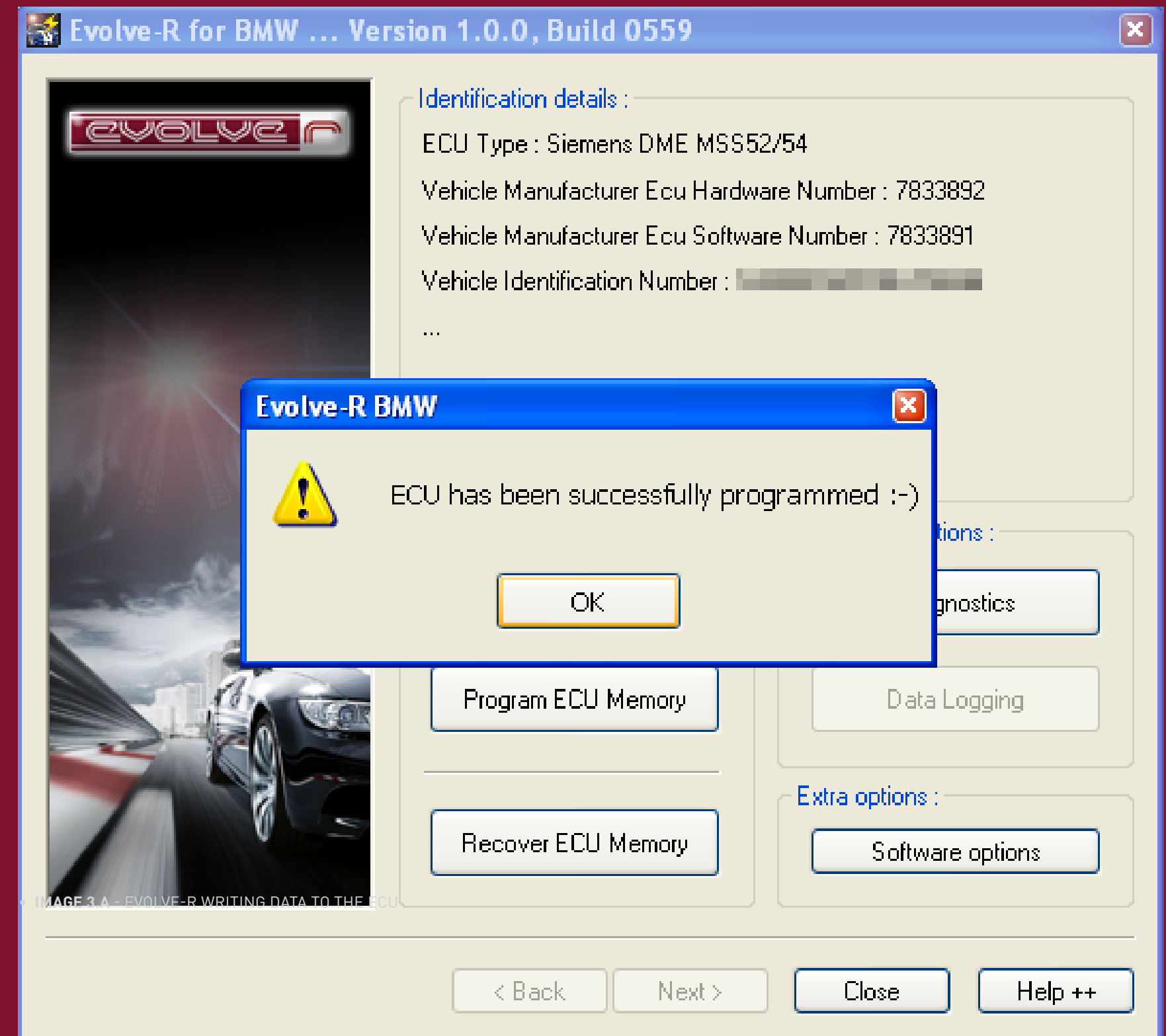
COMPLETE

Once programming is 100% complete please switch off your ignition and remove the evolve-R cable from your OBD-II port. Wait 10 seconds before you start your engine.

Enjoy your new found powe-R!

Due to the adaptive nature of modern ECU's a short running period is required. This is usually no more than 15-50 miles/20-80km's.

⚠ If your vehicle has been with BMW for any reason, ensure your ECU has not been updated. Follow steps 1-5, check your software version is the same as previously. If this has changed, **your tune will not work!** You will require a new tune, please contact us to arrange. Evolve can not be responsible for updates to your ECU that result in us not being able to tune your vehicle. This includes, but is not limited to, official BMW updates.



TROUBLESHOOTING GUIDE

Installation Error: 'The program can't start because ftd2xx.dll is missing from your computer. Try reinstalling the program to fix this problem'

Fix 1: Please request driver install file from support@evolveautomotive.com. Run supplied file **CDM20814_Setup.exe** and the drivers will be automatically installed.

Fix 2: If the above doesn't work please use the below:

Disconnect the cable from the laptop.

1. Go to the download folder and open the program:
'Backup Drivers and Files/CDMUninstaller_v1.4/CDMuninstallerGUI.exe'
2. Click this and a box will appear, press the **add** button and then the **remove** button.
3. Now reconnect the cable to the laptop.
4. In Windows, go to: 'Control panel > device manager>

other devices. You should see Evolver USB. Double click this.

5. The next box will appear there should a button 'update drivers'. Click this
6. Next press the browse button and locate the folder named 'Backup Drivers and Files', highlight this and press next.
7. This should have updated the drivers and the cable is ready to use.
8. If you have any issues please do not hesitate in contacting us and we shall install for you remotely.

Installation Error: 'Your drivers are too old. Please update from the FTDI Website'

Fix: Please see the fix above to install the FTDX drivers on your computer.

TROUBLESHOOTING GUIDE

Car will not start directly after installing the software

In some cases it may be due to having older software - contact support@devolveautomotive.com and we will supply the latest version of software and the issue will be fixed.

If this is not the case, and there was an error during the writing process for whatever reason, we can recover the ECU. Please get in touch and we will aid in restoration.

E60 M5: Some older model E60 M5's require at least 15 minutes between installing the new software and starting the engine. After installing the software, exit the vehicle, lock the doors remotely and leave the vehicle with no electrics on for at least 15 minutes. You can then return and start the car as normal.

Error: "Incorrect file size"

Reason 1: Online email providers such as gmail/hotmail sometimes inexplicably alter the file sizes of attachments. As such we will have to resend your file through a file delivery system. Contact us for this service.

Reason 2: The 'Data Area Only' box should be unchecked for certain vehicles. Please ensure it is a requirement for your vehicle (it will say so in the section for your vehicle) and if so, uncheck the box and attempt to write again.

Error: "Unable to link Xdevice"

There may be a firmware issue with your device, please contact support@devolveautomotive.com for a replacement unit.

TROUBLESHOOTING GUIDE

The dealer has reflashed my ECU after installing the tune

Do not attempt to flash back in your tune file. Please re-read your new ECU data, send to us and we will create a new tune based on your new ECU software.

I feel no difference after installing the new tune

Modern vehicle ECU's require a short adaptation period. You will begin to feel the difference after at least 15 miles. For full adaptation we would recommend at least 4 tankfulls of gas to reach it's full potential. Our post-dyno results are mostly with 15 miles of adaptation.

I cannot find the right fuel (using different octaned fuel than what the tune is written for)

If you must use lower quality fuel we recommend not filling up, and purchasing enough only to get you to the next filling station with the proper quality fuel. Knock can

occur when using lower quality fuel that what is tuned for so it is not recommended.

If the above doesn't help and you still have installation issues please contact support@evolveautomotive.com and we will guide you through the process.
